

BACK 2
SCHOOL





OUR MISSION: THE 4 R'S

- Rigor
- Relevance
- Relationships
- Reflection



C V H S

4 R's

Dedicated to every student's success through:

Academic
RIGOR

Personal
RELEVANCE

Meaningful
RELATIONSHIPS

Thoughtful
REFLECTION

ESLR's

Graduates of Central Valley High School will be:

Prepared to continue academically **RIGOROUS** course work in college or trade school.

Prepared to pursue a career path personally **RELEVANT** to their interests and strengths.

Effective at building meaningful personal **RELATIONSHIPS**.

REFLECTIVE thinkers.

CENTRAL VALLEY HIGH SCHOOL

RIGOR

Success



RELEVANCE



RELATIONSHIPS



REFLECT



CV GRAD REQUIREMENTS

- **1. Must Pass the CAHSEE!**
- **2. Must have a minimum of 230 Credits.**
- **3. Must pass all required courses**
 - Required courses align with the A-G college entrance requirements. (If students pass classes we sign them up for with C's or better they will be eligible to attend a university!)

A-G REQUIREMENTS TO GO TO A 4 YEAR UNIVERSITY

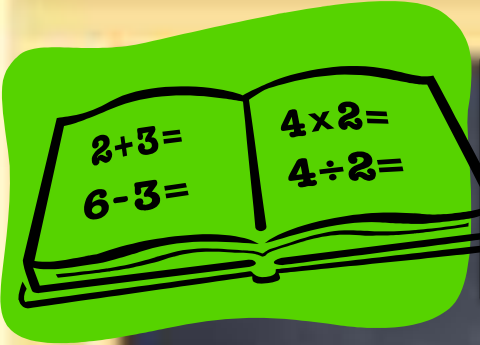
- A Requirement: C's or better in World and US History
- B Requirement: C's or better in ALL (9th, 10th, 11th, 12th) English.
- C Requirement: C's or better in at least Algebra I, Geometry, Algebra II (highly recommended to take additional math classes).
- D Requirement: C's or better in one life science (Bio or Anatomy) AND one physical science (Chemistry or Physics)
- E Requirement: C's or better in Span II or higher
- F Requirement: C or better in a Fine Art (art, theater art, choir, dance, and band classes)
- G Requirement: Additional 1 year of college prep elective (can be additional year of any of the above subjects such as Finite Math, Art II or Physics, or a CP elective such as Intro to Vet Science)

SOPHOMORE REQUIRED COURSES

- English 10
- Math
- Science (typically Chemistry)
- World History (or AP European History)
- PE

ENGLISH 10

- The English 10 teachers would like you to know that Cs or better are required for college.
- Your student must pass ALL semesters of English to graduate high school. Fs require summer school or night school.
- Reading is required outside of class in order to be successful.



MATH

The Math department would like you to know that a C or better grade is required to be A-G eligible and is a pre-requisite for higher level math.





CHEMISTRY

- Chemistry is a sophomore class, but your student is required to pass biology with a C or better before entering Chemistry.
- Chemistry is an interactive lab based class that is tied to everyday life (butter lab, flame lab, Kool-Aid lab).
- Chemistry assessments can be retaken to increase understanding of the topic and initial quiz score.
- Chemistry teachers have office hours to allow students opportunities to understand topics that are unclear, to retake any assessments that are not at a proficient level, and to make up a missed lab.
- Chemistry is a required course to graduate and to take higher level science classes like AP Chemistry, AP Biology and Anatomy/Physiology.



WORLD HISTORY

- History Department Keys to success:
- Attend class on time.
- Participate in class activities and discussions.
- Complete assignments and reading.
- Prepare for quizzes and tests.

PE

- **PE is a required course! (20 credits are required to graduate)**
- **If a student fails PE he or she must take it an extra year!**
- **Students are required to dress out and participate EVERYDAY.**
- **All classes run the mile once a week which contribute to students grade.**
- **Make up miles are available one week before grades are due in a given grading period. Students may make up 2 miles per grading period due to absences or being sick.**
- **Do not leave valuables**

COLLEGE

- **What's the difference between a Junior College, a CSU, a UC, or a trade school?**

JUNIOR COLLEGES (2 YEAR COLLEGE)

- **Examples: Modesto Junior College, Merced Community College, Delta Community College**
- **Anyone can attend (no entrance requirements).**
- **May earn Associates Degree (2 years) or Vocational Ed Certificate.**
- **Designed as the first half of a 4 year education path. (2 years at JC, then transfer to finish 2 years at CSU or UC to earn a bachelors degree)**
- **Impacted (longer waitlists/harder to get classes)**
 - **It often takes more than the planned 2 years to complete general ed for transfer due to various reasons such as needing remedial classes, going to school part time, having to retake classes**
 - **It is crucial if a student decides to start at MJC, that they are motivated. We encourage students to take math all four years of high school and to do well in English to avoid having to take remedial classes.**
- **Lower cost; Financial Aid available.**

CSU (4 YEAR UNIVERSITY)

- Must be A-G Eligible and take the SAT or ACT
- May earn a bachelor's degree (4 year degree)
 - Bachelors degree's are required for most professional careers for your students generation.
- Smaller waitlists (easier to get classes that you need)
- Costs vary by school but extensive financial aid is available for those who qualify
- Most students will qualify for some sort of financial aid
- Higher percentage of students who START at a CSU will FINISH and earn their degree!

UC (4 YEAR UNIVERSITY)

- Must be A-G Eligible and take the SAT or ACT
- Similar to CSU's but more competitive.
- Minimum requirement of 3.0 GPA to be able to apply
- More expensive but more financial aid is available.
 - Example the Blue and Gold grant pays for a students entire tuition and cost of school if their family earns less than \$80,000 and the student meets academic qualifications (3.0, a-g eligibility, qualifying SAT/ACT scores)

GPA

- A CSU/UC grade point average (GPA) is based on your grades in the A-G requirements completed during 10th and 11th grades.
- Though students must pass ALL A-G requirements all years, colleges begin to look at GPA beginning Sophomore year.
- CSU's require a minimum 2.0
- UC's require a minimum 3.0
- 10th grade is arguably the most influential year on a students post education path.
- If your student did not earn C's or better freshman year, they will have opportunities to make these up. All Sophomores have time to become A-G eligible if they are not already through summer school. C's or better from this point on is imperative.

PSAT

- All CSU's and UC's require students to take the SAT or ACT test
- This test is a big part of what determines if a student is accepted to a college.
- The PSAT is a practice SAT test that CV offers for the minimal cost of \$5.
- It is **HIGHLY** recommended that **ALL** Sophomores take this test to help prepare them for the actual SAT that they will take next year.
- PSAT will run on October 19th. Sign ups will be announced and sent out via Remind 101.

LEARNING DIRECTOR BREAKDOWN

- SOPHOMORE CLASS:
- Mrs. Cole- A-Gi
- Mrs. Loeffler- Gla-Pam
- Mrs. Mariscal- Pan-Z

REMIND 101

- To receive text messages regarding important college dates and deadlines and other pertinent counseling information for your FRESHMAN:
- Text @fbb9a to 669-800-4365

** Don't forget the @ sign



H:\BTS Powerpoint\Film-Strip1.jpg

Visual/Performing Arts & Technology

- Courses where your students can make their passion into a career or major in college.



CENTRAL VALLEY STAFF

